



What is MAGNET?

MAGNET is a state-of-the-art browser-based Web 2.0 software solution that automates planning, property management, permitting, licensing, code enforcement, inspection and tracking processes for any size government. MAGNET is currently in use by clients ranging from towns with 8,000 parcels to large counties with 130,000 parcels. MAGNET is designed to significantly improve users' ability to easily manage and access property information with an intuitive web-based solution. It maintains a complete database of every property in a jurisdiction which also provides document management and fully-integrated GIS mapping to give you the ability to locate, identify, view, or measure properties directly from an interactive map.

Is MAGNET easy to use?

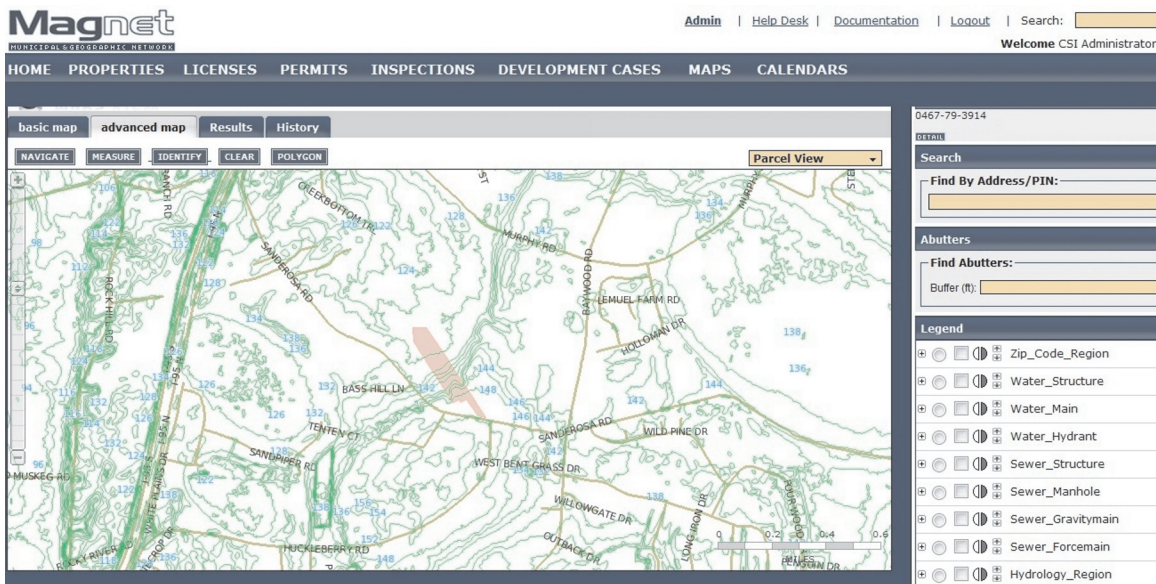
MAGNET is as easy as searching the internet with Google. Type any information you need and MAGNET will immediately locate the associated document(s) or form(s), bringing them up on the screen. Type anything—a first name, last name, phone number, parcel number, permit number, inspector, contractor, etc. — and MAGNET will display all of the relevant information.

What about my Budget?

MAGNET provides best-in-class, enterprise-level functionality for the always cost-sensitive government budget. It is built upon a number of trusted enterprise-level Open-Source software applications. These robust applications have no associated or ongoing licensing costs. The savings are passed directly to our clients. By design, the cost of a full MAGNET implementation is priced as much as 50% lower than the cost of other (sometimes less robust) enterprise solutions.

How does MAGNET work?

MAGNET is accessed from any computer in your office. Just double click on the desktop icon and you will be prompted to enter your user name and password. From that point MAGNET will let you review, edit, and work with all of the properties, parcels, permits, inspections, and projects your job requires.





What are some other great features of MAGNET?

- Simple, easy-to-use search functions.
- Automatic permit pricing makes applications easy and ensures nothing is left out. Building projects are automatically created based on your building and zoning ordinances and regulations.
- Track contractor and escrow accounts to verify they are up to date prior to work being authorized.
- GIS mapping is completely compatible with industry standard map data file types (ESRI, Autodesk, etc.)
- Browser-based...no special software is needed on any of your computers.
- Robust error checking for data entry. If a name or address is already in MAGNET, you will never have to type it again. This eliminates duplicate entries, such as Main St. or Main Street.
- Fully customized work flow process and permit pricing for processing permits, inspections, applications, fees, etc.
- Automatic reminders are generated to keep project tasks from falling through the cracks.
- Summary reports easily interface with most accounting systems.
- Customized reporting directly to standard office applications (MS Word, MS Excel, etc.).

How about safety and security?

MAGNET has many user levels and groups so you may control who has permission to view and/or change information. All data is stored in a safe and secure (encrypted) database system. As a disaster prevention measure, the entire database is automatically backed-up to a remote, secure offsite facility.

Computer Software Incorporated

MAGNET was developed by Computer Software Incorporated of Chalfont, Pennsylvania. The software's comprehensive, innovative solutions, user-centered design and ease of use are a product of our corporate culture and team expertise. We value integrity, responsibility, hard work, problem-solving, and open-mindedness. We enjoy what we do, and you will enjoy working with us. We are committed to straightforward, articulate communication, a high level of service to our clients, and to exceeding expectations.

We research and take advantage of "best-of-breed" technologies, and believe in the application of the appropriate technology for a given problem, whether you require a basic installation for a few users, or a cutting edge, enterprise-scale software and hardware solution.

Our staff is composed of degreed engineers and certified professionals with expertise in a wide variety of areas including software development, project management, information science, and government processes. CSI provides its employees with a relaxed, supportive, collaborative working environment that fosters a dedication to excellence. You can count on our team to be personable, reliable, creative, honest and intelligent. Our combined experience gives us unique insight into the needs of government institutions, the mindset of government employees, the need for rigorous standards in data security, and our responsibility to provide dependable applications to automate critical government services.

Computer Software Incorporated is a 28-year veteran provider of software and solutions to the government sector. We are a Microsoft Certified Gold Partner, and a member of Infraguard.